



***Letter of Notice-Special Event/Road Closures***  
***11/4/22***

The City of Inman is so excited for our two wonderful traditions: Light Up Inman and our Holiday Parade. These annual events are fantastic opportunities to celebrate the holiday season for our residents and welcome newcomers to our downtown.

Our parade route for this year will begin at Leroy Mathis Park and come into downtown on Main Street. The route will continue to City Hall, then take a right on to Ladson St, a right on Blackstock, a left on Mill St. and finally a right on Oakland Ave. Please see route map attached.

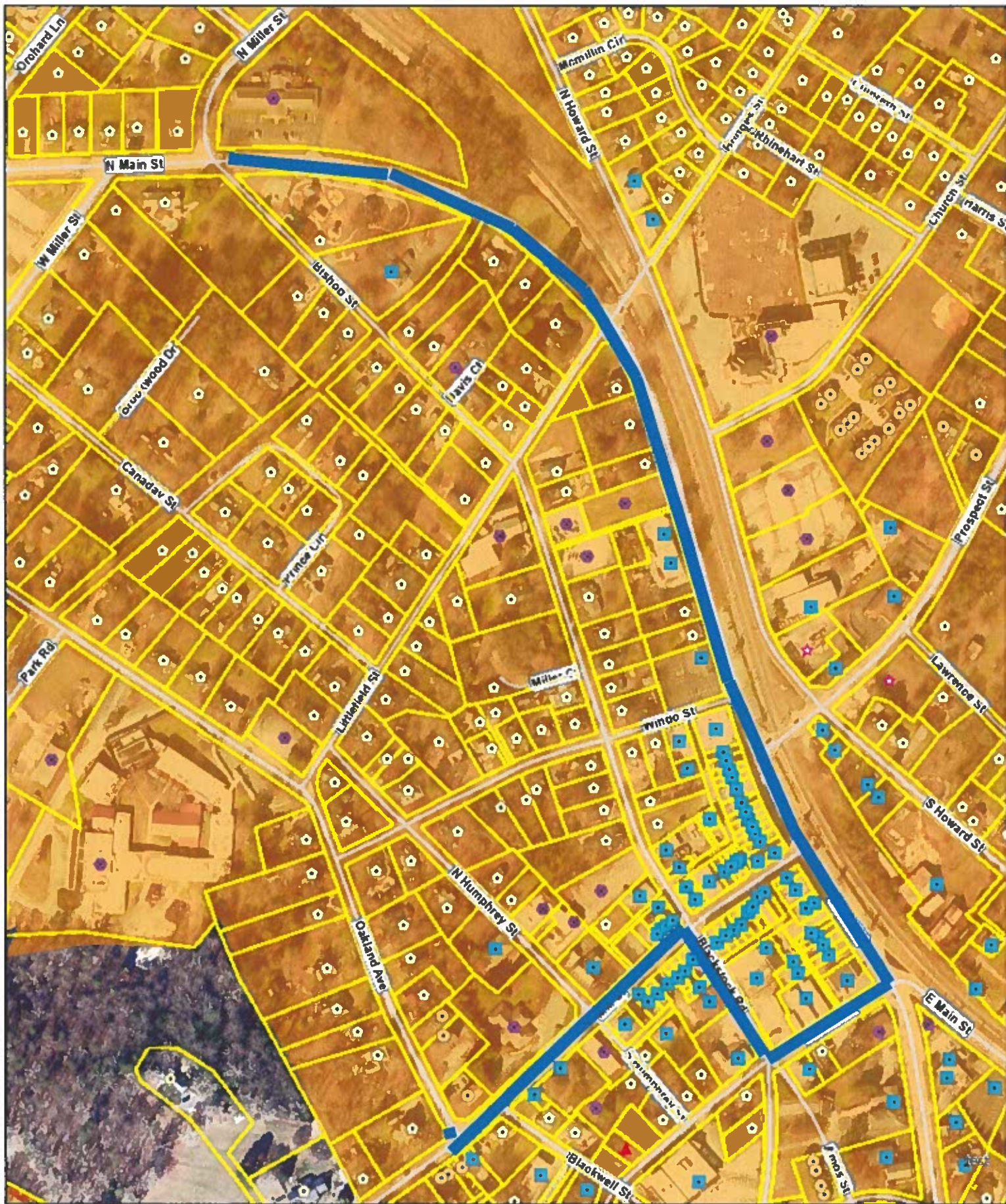
At the conclusion of the Parade at roughly 6:30 we will move to the stage on Main Street for our Light Up Inman festivities. This will include dancers, music, a reading of A Night Before Christmas, and then culminating with our lighting of the tree.

Date-	December 3rd (rain date of Dec. 4 <sup>th</sup> )	
Event Time-	Parade begins @ 5:00, Light Up Inman for follow @ approx. 6:30.	
Set Up-	2:00pm (all cars off the streets at this time)	
Closures-	Main Street from Wingo St to Gosnell Ave. East Main from Ladson to Jumper St. Mill St from Main St. to Humphries St. Blackstock St from Ladson St to Mill St. Bishop St from Mill St to City Parking lot Mill St. Parking lot will close Saturday the 3 <sup>rd</sup> 3pm	<i>See Map on Back</i>

The City is working with local partners for locations where event parking will be available.

Please reach out to Joe Lanahan, City administrator, with any questions.

[ilanahan@cityofinman.org](mailto:ilanahan@cityofinman.org) or 864-472-6200 x113

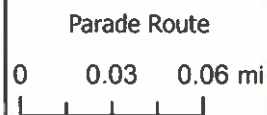


**Addresses**

- Single Family      Single Family
- ⊙ Multi-Family      Multi-Family
- ▲ Mobile Home      Mobile Home
- ★ Power Only      Power Only

- Nonresidential      Nonresidential
- Problem      Problem
- Tax Exempt      Tax Exempt
- <all other values>      <all other values>
- Parcel

— Roads



Printed:

